

SIMPALAB

INNOVATION FOR PAPER DIRT LABORATORY ANALYSER

THE SIMPATIC LABO IS A LABORATORY SENSOR DEDICATED TO AN ACCURATE DIRT COUNTING ON:

- a sheet of paper (by reflected light)
- a handsheet (by reflected or transmitted* light)

A RELIABLE AND POWERFUL TOOL

Quick measurement and calculation (for a 10 samples range you need less than 10 minutes).
Calibration of the measuring system according to the EFPG standard (CEN/TC 172).

ISO 5350

CEN/TC 172

TAPPI TEST METHOD T563



PC + scanner



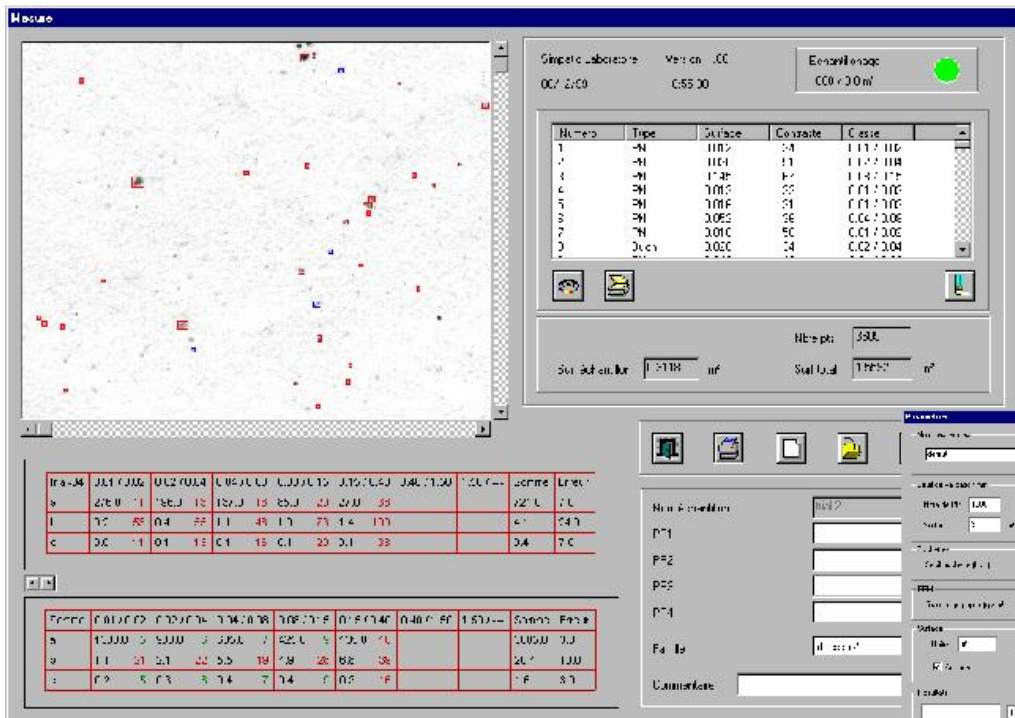
Detected objects
Black spots (63 microns)
White or grey spots
Shives

A FRIENDLY SOFTWARE

1 measurement window

Individual investigation of each detected spot
Results' table (configurable)

1 configuration window
ISO classes
11 configurable classes



TECHPAP SAS
BP 251 - 38044 Grenoble cedex 9 - France
Tél. +33 (0)4 76 51 74 75 - Fax +33 (0)4 76 42 05 04
www.techpap.com - techinfo@techpap.com

North America: **Techpap, Inc.**
5970 Unity Drive - Suite E - Norcross, GA 30071 (USA)
Tel. +1(770)734 04 42

SIMPALAB

MEETS ALL THE CRITERIA OF THE DIRT CALCULATION STANDARDS

The adjustment of the future ISO standard with regard to dirt counting has exposed some flows in existing counting equipment. Samples of paper recently tested with 6 different pieces of equipment gave widely varying results (see table here under : 5 samples A, B, C, D and E have been tested with 6 well known classical dirt counters available on the market). The standard imposes a set of recommendations aiming at avoiding any fluctuation due to measurement equipment. The standard stipulates among others :

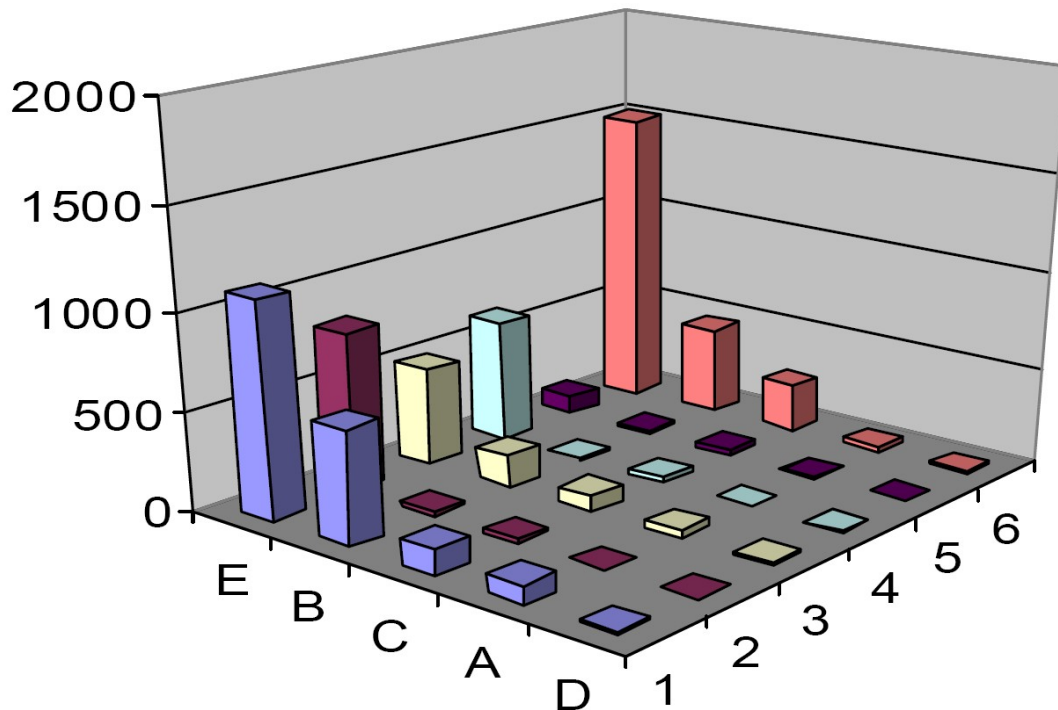
- Sampling management and information about the validity and relevance of the measurement.
- Individual examination of the calculated points must be possible.

- Calibration of the system via the EFPG chart.
- The detection contrast must vary with regard to the area of detected spots.

The detection contrast must be compared to the local contrast of the spot (1 cm ring around the spot).

ALL THESE PARAMETERS ARE INTEGRATED IN SIMPATIC LABO.

Dirt analyser - Comparison of well known speck analysers



TECHNICAL CHARACTERISTICS OF THE SIMPATIC LABO

Resolution	400 dpi (63 microns)
Number of classes	11 entirely configurable
Sampling	Minimum number of spots to validate the trial or minimum analysed area
Detected spots (colour)	Black, grey, white
Detected spots (shape)	Shives, spots
Results display	In mm ² / m ² , number / m ² , ppm, inch ² / inch ² , number / inch ² , a.s.o. Possible display in EBA (Equivalent Black Area of each spot)
Data exporting	.txt defined format
Software and operating system	Software running under WINDOWS