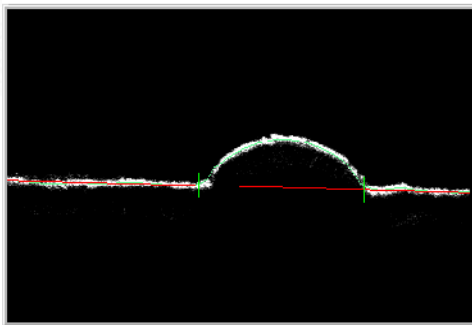
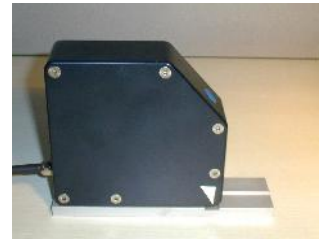


SCORING TESTER

The Score Tester is a compact optical device, connected to a PC, that can measure box scores. The unit is constructed using heavy duty components. As the analysis is optical, the board doesn't need to be conditioned. So the sensor can be used directly at the scoring machine for control or adjustments.scoring knives

The optical gauge, industrialised by TECHPAP, is a compact piece of equipment, connected to a PC. The gauge only needs to be placed on the score of the blank (not conditioned !). A very fine laser line is projected on the score under the gauge. An integrated camera transmits the image of the deformed line by the score to the PC, especially equipped for video analysis. To obtain a measurement, only click on the button of the gauge.



Statistics			
	Height mm	Length mm	Centering mm
Maximum	0.21	1.39	0.02
Average	0.21	1.39	0.02
Minimum	0.21	1.39	0.02
Std	0.00	0.00	0.00

Exit Cancel Zoom Measure

Help Last Production Print

On the PC screen are displayed :- The image of the score geometry
- Height of the scoring
- Width of the scoring
- Centering of the scoring.

These values are calculated with an accuracy of 1/100 mm. The PC displays also average values, statistic data, tolerance - threshold overpassing. For each measurement it is possible to save, to load or consult a file



System with a portable PC