

**PULMAC**  
**INTERNATIONAL**

A Division of Cowan Technologies Inc.

# DirtScan™ 100



LCD Monitor, Scanner, Keyboard and Mouse

**Production Test Method -  
Quick test with little  
training required.**

## Description

The DirtScan100 is specifically designed to be used in conjunction with the Pulmac MasterScreen to generate a relative dirt count on screened dirt displayed on a 22 cm in diameter white filter paper. Depending on pulp and application a 0.003", 0.004" or 0.006" slotted screen plate may be used.

## Benefits

The DirtScan100 will generate simple and effective dirt data for feedback to production operators for dirt optimization efforts. The DirtScan100 is easy to set up, easy to train and simple to interpret data.

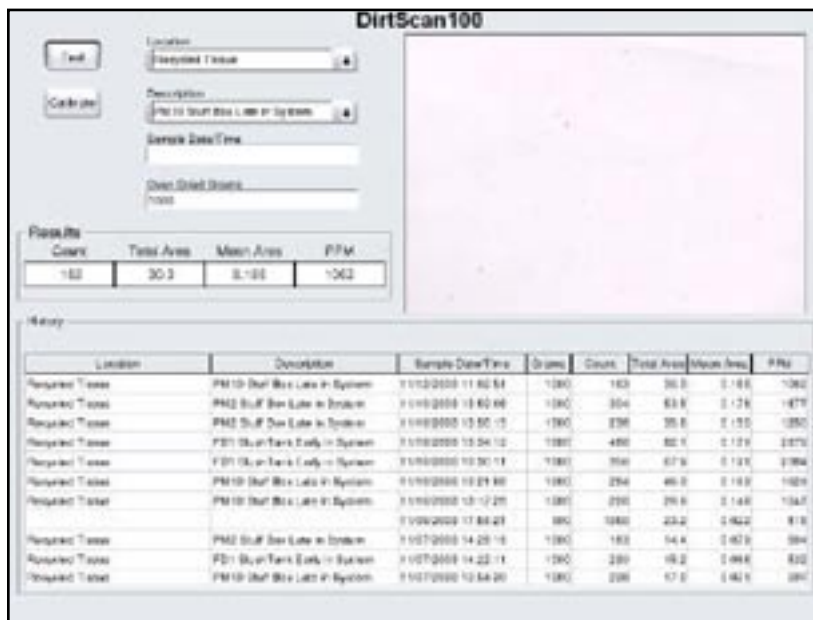
Pulmac International  
A Division of Cowan Technologies Inc.  
32 East State Street, Suite 10  
Montpelier, Vermont  
05602 USA

Phone: + 1.802.223.2663  
Fax: + 1.802.223.2664  
Email: [info@pulmac.us](mailto:info@pulmac.us) <<mailto:info@pulmac.us>>  
URL: [www.pulmac.us](http://www.pulmac.us) <<http://www.pulmac.us>>

# DirtScan™ 100

## Fast & Easy

Full scan and data output takes less than 30 seconds. Just click on "Test" button.



DirtScan100 screen shot of monitor before running a test.

## System Features:

### INPUT

- **Enter location:** Pop up scroll to location setting or add new location.
- **Enter Description:** Pop up scroll to description or add new description.
- **Enter Time/Date:** Enter or use default of current time/date.
- **Enter sample size:** Data will then be normalized to 1 Kg or use default of 1000 g.

### OUTPUT

- Current test data of "Count", "Total Area", "Mean Area", "PPM" is prominently displayed.
- Image of current scan is displayed.
- Last 11 test results are displayed.

Calibration check using supplied standard. Check for repeatability associated with changes in lighting, software, scanner mechanics, lens cleanliness, and other changes in hardware that influence test results.

Represented by: **REGMED Indústria Técnica**  
 Av. Dr. Alberto Jackson Byington, 1595  
 CEP 06276-000, Osaco - Brazil  
 Phone + 55 11 3601-5700  
 Fax. + 55 11 3601-5973  
 regmed@regmed.com.br  
 www.regmed.com.br