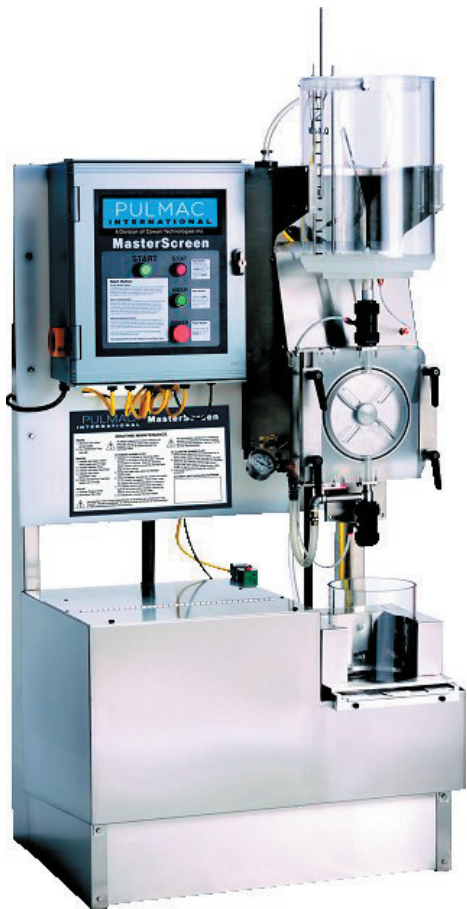




A Division of Cowan Technologies Inc.

MasterScreen™



XLQ MasterScreen

**Rapid Results -
Displays in less than
10 minutes**

Description

The MasterScreen is a low consistency screening device designed to mechanically separate fibers from contaminants, including stickies, dirt, shives, vessel cell elements, plastics, hot melts. Contaminants are deposited automatically onto a filter paper for display and analysis.

Benefits

The MasterScreen provides a rapid and repeatable method for the collection of both shives and/or stickies. For shives, it allows for the pinpointing of problems that occur in areas such as; digesters, cleaners, refiners, grinders and screens. For stickies, it allows for the pinpointing of problems that occur in repulpers, cleaners, and screening. This data will support reducing the frequency of dirt, shives or stickies in the final product, leading to increased profitability.

Bottom-line: Increased profitability through troubleshooting, optimization and monitoring.



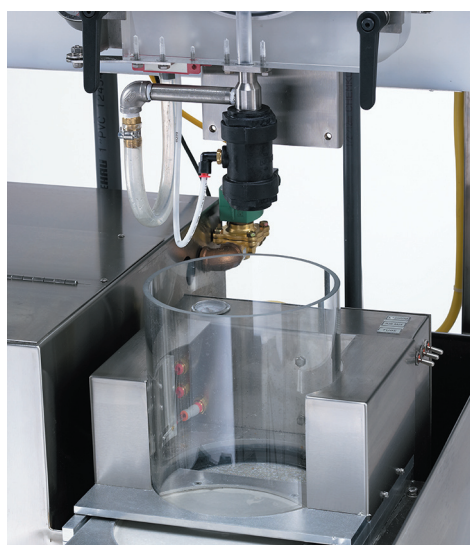
Pulmac International
A Division of Cowan
Technologies Inc.
32 East State Street, Suite 10
Montpelier, Vermont
05602 USA

Phone: + 1.802.223.2663
Fax: + 1.802.223.2664
Email: info@pulmac.us
URL: www.pulmac.us

Master Screen™



XLQ Valve



Auto Filter

System Features:

- Pressurized screening chamber adjustable to 15 psi
- Screens up to 100 grams (oven dried equivalent)
- Results between 10 - 15 minutes
- Laser cut screen plates available in two standard sizes (.004" and .006") and custom between .003" - .014
- AutoFilter for quick deposit of contaminants
- AutoFilter can customized to accommodate various sized filter paper
- AutoFilter cartridge is easily repaired with "bolt in" screen
- Lid on feed tank localizes water spray
- Large feed tank to accept samples up to 100 grams, oven dried equivalent
- Feed tank air mix to ensure delivery of uniform consistency
- XLQ valve between screening chamber and feed tank
- Multi program feature including MS A, XLQ, SA, and SCRN
- Adjustable feed tank level control

Related Test Methods:

- PAPTAC C.12P Sep 03 Laboratory Screening of Pulp (Pulmac-Type Instrument)
- TAPPI T 274 sp04 Laboratory Screening of Pulp (MasterScreen - Type Instrument)
- INGEDE Method 4 99-12 Analysis of Macro Stickies in Deinked Pulp (DIP)
- ASTM D6148-97 (2002) Standard Practice for the Separation and Examination of stickies
- ISO 15360 - 2:2001 Recycled Pulps - Estimation of Stickies and Plastics image analysis method
- TAPPI T 277 pm-99 Macro Stickies Content in Pulp: The "Pick-Up" Method

Shipping Specs	Height	Width	Depth
Net Weight: 330 lbs 150 kg	85 in 219 cm	35 in 89 cm	33 in 84 cm

Service and Hardware Requirements:

- 10 gal. per minute of potable filtered water
- 3/4" NPT male fitting for water supply
- 1-1/2" NPT male fitting for drain
- 115v, 60 Hz, 20 Amp electrical service
- Compressed air at 10 CFM at 60 psi
- 3/8" slip fitting for air supply

Represented by:

Regmed Indústria Técnica de Precisão
 Av. Dr. Alberto Jackson Byington, 1595
 CEP 0627-000 - Osaco, Brazil
 Phone: +55 11 3601-5700
 Fax: +55 11 3601-5973
 Email: regmed@regmed.com.br
 URL: www.regmed.com.br