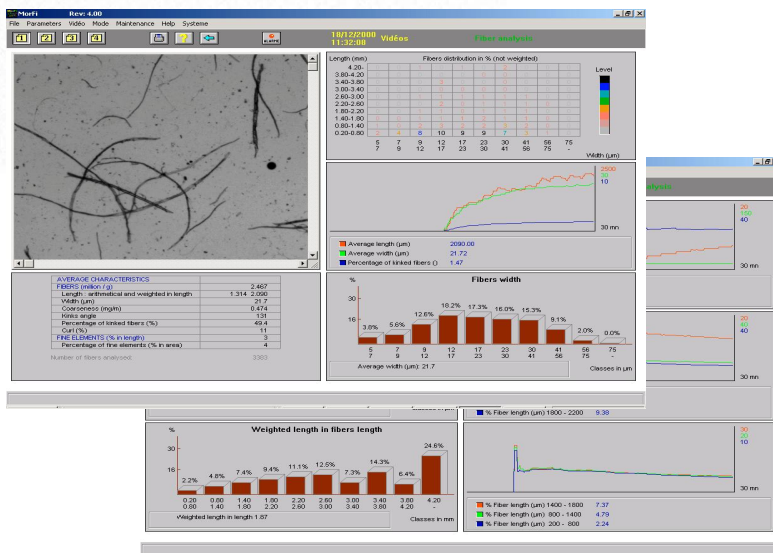


MORFI ON-LINE

ON-LINE MORPHOLOGICAL CHARACTERISATION OF PULP

MorFi is a research and quality control tool to completely characterise fiber morphology. The analysis is done on a fiber network, so that the measurement occurs in the fibers' natural unrestrained environment. This approach allows reliable statistical measurement of thousands of fibers at high speed and accurate determination of important characteristics such as curl and kinks.

MorFi is a development of TECHPAP and the CENTRE TECHNIQUE DU PAPIER (CTP) and French Paper and Graphic Industry Engineer School of GRENOBLE (EFPG).



PRINCIPLE

Sampling is achieved by drawing up a small amount of pulp in a chamber where it is prediluted. It is sent in a dilution unit where it is agitated and diluted at 300 mg/l or 30 g/l according to the type of measurement required (shives and fibres or fibres only).

8 reasons for choosing MORFI On-Line

- Quick measurements (from 3 to 5 minutes per batch)
- Reliable : a high amount of fibres is analyzed ((several thousands of fibres in 3 minutes)
- High accuracy of the measurements
- User's friendly software under WINDOWS
- Easy and rapid implementation
- No plugging of the measurement cell, automatic flushing after each measurement
- Easy maintenance, strong construction